

FIRST REPORTS

Monthly Newsletter of First Lutheran Church -September 2016



"Serving Christ

through Worship, Learning,

and Caring"



Building a Bridge

James Michner's Centennial is a fictional account of the history and settlement of the American West. Through the eyes of a French-Canadian trader named Pasquinel, Michner brings together the stories of the Arapaho of the Great Plains and the European based community of St. Louis. As this adventure moves between the clutter of the city and the wide-open spaces of the plains, he becomes the bridge between two considerably different worlds.

Followers of Jesus Christ also have the opportunity to build bridges between two very different worlds...those who have a relationship with Christ and those who do not. Early Christians in Thessalonica had been building bridges to their idol worshiping culture, so that Paul could say, "for from you the word of the Lord has sounded forth, not only in Macedonia and Achaia, but also in every place" (1 Thess. 1:8).

First Lutheran is in a great position with the advent of the Busy Bee Pre-School opening its doors on September 12, and a possible Cub Scouting program this Fall, to build bridges to those around our church with the "the word of God" and the example of our faith.

Continued on next page...

Mark Your Calendars!

9/09 - 1:00pm

First Friday club

9/10 - 7:30am

Men's Prayer Breakfast

September 11

Rally Sunday

9/11 - 11:30am

**Special Congregational
Mtg.**

12:00pm

Outreach Breakfast

9/17 - 6:00pm

**Pasta with Friends Dinner
Dessert Auction**

9/23 - 6:00pm

chinaconnect Dinner

As First Lutheran continues to witness and serve in our hilltop community it is my hope and prayer that, by God's Word and through our lives, we can become a bridge to those in our community who do not yet know the love of Christ.

Blessings and Peace,

Pastor Steve



Father, help us live in such a way that others will want to know about Your Son. May we not merely try to do what's "right" but instead live as people forgiven and loved by You. Amen.

Stewardship Corner...

God Is the Source of All Things

Remembering that God owns everything prompts a remarkable shift in our view of stewardship. Usually when we think of stewardship, we define it as our giving to God or to the church something that belongs to us. However, stewardship is just the reverse, because it is our freely using, enjoying, and giving what already belongs to God (Psalm 50:9-12). The air we breathe, the water we drink, the land on which we live are all gifts from God. All that we have are gifts we enjoy out of God's love for us.

Prayer: Lord, you are the owner of the animals in the forest and all the cattle on a thousand hills. Help us to acknowledge you as the owner of all things. We thank you for allowing us to be your stewards and grant us faith to be faithful in our stewardship. In Christ's name we pray. Amen.

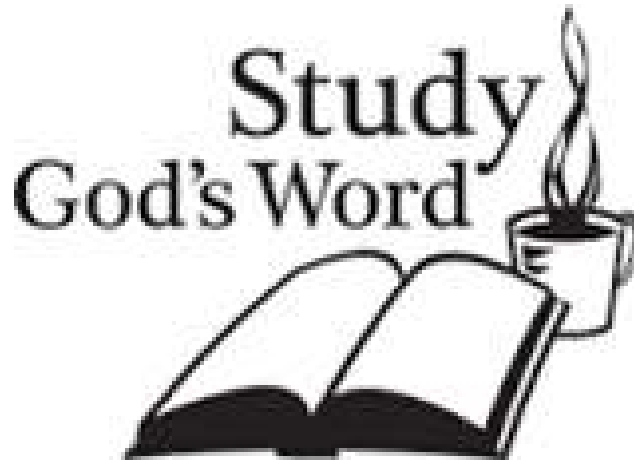
Blessings on your stewardship journey!

***Learning Opportunities at First Lutheran**

Sunday Morning Adult Forum

Sunday, September 11th at 9:30am in the Fireside Room

“Now I Lay Me Down to Sleep” will be the topic for the Adult Forum class that will explore issues of death and dying, our theological understanding of death, discussion about planning a Christian Memorial/Funeral Service, and discussion about wills, estate planning, & Legacy gifts.



Wednesday Night Bible Study

Wednesday, September 14th at 6:00pm in the Fireside Room

We will be reading through the book of “Isaiah”

Thursday Morning Bible Text Study

Thursday, September 15th at 10:30am- Fireside Room

Please Come Join Us. All Are Welcome!

Thank you!

"Thank you for your prayers, visits, calls, cards, transportation, and meals during my shoulder replacement and early recovery. I am so blessed with a wonderful, thoughtful and generous church family."

Blessings,
Sharon Bongfeldt

Members of FLC Congregation,
Church services and Bible studies were a very important part of Helmut's life and I am very grateful you were a part of it.
Thank you!

Sincerely,
Edith Andres

A big Thank You to all who donated bathroom towel sets for the YWCA Pierce County Domestic Violence Shelter. To donate, either give the towel set of bath and hand towel, and wash cloth to any of the quilters. If you would like to have a receipt for your donation, please see Karin Hirschert or Sharon Bongfeldt.



Thank you to everyone who joined us for the special celebration given in honor of the "Ladies of 1936" last Sunday. The food was delicious and it was very much appreciated by all of us.

Ginny Ofelt, Jimmie, & Julia Mueller

We ❤️ Our Volunteers

Thank you for your service!

Listen Live at Lunch

Listen Live at Lunch (LLL) completed another successful season on 17 August 2016. 633 persons attended the concert series (averaging 63.3 attendees each week). The donations totaled \$3056.25 (\$305.63 average per week) which is a significant number that allows us to offer the series again next year. Thank you to all who shared your musical talents and to those who assisted with programs, ushering, building security, and cleanup.

A big thank you of appreciation to Duane Hulbert, who organized the entire program, and to Judy Bebich who published the weekly programs.



ATTENTION MEMBERS!

Special Congregational Meeting Sunday, September 11th (Rally Sunday) in the Sanctuary following the 10:30am worship service

The purpose of the special meeting is to authorize the purchase and installation of a new sound system for the sanctuary. The cost of the project will be approximately \$35,000. Funding for the project will be provided through the use of \$25,000 from Alice Decker's recent bequest for "capital improvements" along with \$10,000 additional funding to be provided by the congregation. All members are encouraged to attend.



PANCAKE BRUNCH

You are invited to join us for a **Pancake Brunch** immediately following the Congregational meeting on Sunday, September 11th in the Fellowship Hall. It is being put on by the Outreach Committee and any donations collected will go to Thanksgiving Food Baskets.

Mark Your Calendars...

Pasta with Friends Fundraising Dinner will be held at First Lutheran Church on Saturday, September 17 at 6:00pm. Invite your friends to learn more about First Lutheran Church and enjoy a delicious spaghetti dinner. There will also be an awesome dessert auction! Bring your friends! Tickets are \$8.00 per person or buy a table for \$64. For tickets, please contact Dick & Edie Cooke at 253-905-0704 or Jeff & Kristy Johnson at 253-297-0889.



On the first Saturday and Sunday of the month we collect canned food and personal care items as an offering at each service. The offerings are divided between the FISH Food Bank of Pierce County and First Lutheran's food closet to help those who come to the church in need of a couple days supply of food. A big **THANK YOU** to all who brought food offerings to replenish our emergency food closet last weekend. FISH Food Bank is very thankful for all the donations First Lutheran gives them so they can provide food to those who need some assistance to feed their families. This is a very worthwhile ministry and your generosity is very much appreciated.



Harvesting Hope

"Do you not say, 'There are yet four months, then comes the harvest?'
Look, I tell you, lift up your eyes, and see that the fields are white for harvest."
John 4:35

SAVE THE DATE

chinacconnect 2016 Fall Dinner
Friday, September 23
St. Mark's Lutheran Church
Tacoma, WA



Celebrating a special occasion?
Honoring a loved one?



There are still many spaces for you to sign up on the 2016 Flower Chart that is posted in the Fellowship Hall. If you would like to provide flowers to beautify the Sanctuary, please sign up on the date of your choice and specify either by indicating on the sheet or by calling the church office at 253-272-1538 if you would like the flowers to be in memory of, in honor of someone, or in celebration of a special occasion.



SUNDAY, OCTOBER 2ND

Join us in the fight against hunger in Pierce
County **5K and 10K Walk & Run**

Individual Registration

Adult \$25
Youth \$15 (6 to 18 yrs)
5 yrs and under \$5

Team Registration (5 or more)

Adult \$15
Youth \$10 (6 to 18 yrs)
5 yrs and under \$5

Thanks to our Sponsors



an ASSOCIATED
MINISTRIES

HUNGER WALK

ASSOCIATED MINISTRIES | EMERGENCY FOOD NETWORK

When:

12 PM: Registration
1 PM: Run Begins
2 PM: Walk Begins

Where:

Ft. Steilacoom Park
9601 Steilacoom Blvd
Lakewood, WA

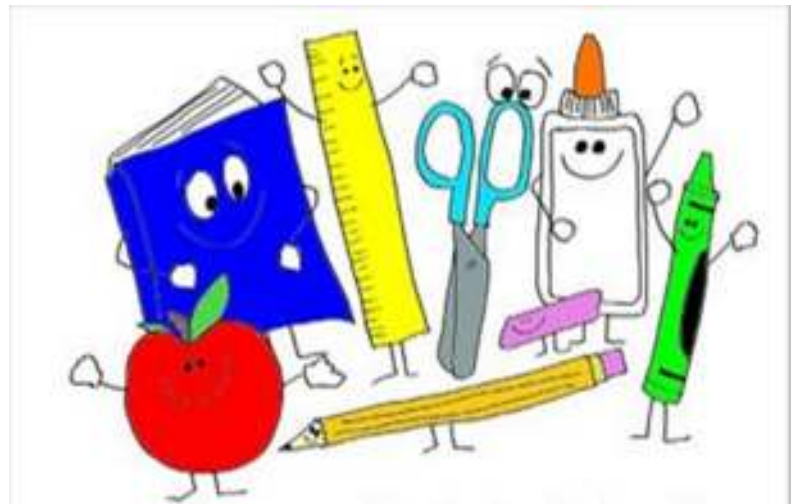
Register online at www.associatedministries.org/events/hungerwalk2016
For more info contact (253) 426-1597 or michelec@associatedministries.org

Questions??? Call Jim & Ginny Ofelt at 253-564-6090.

School Kits

There is an URGENT NEED by Lutheran World Relief for SCHOOL KITS. I am sewing the backpacks, but will happily accept money to buy school supplies or the school supplies themselves. The Back-to-School sales have started, too. :). I need specific items as follows:

- Rulers 12" with inches and metric
- Manual pencil sharpeners
- Pencils (Ticonderoga if possible)
- Pens (no gel ink) ballpoint black or blue
- Erasers (about 2-2 1/2")
- CRAYOLA BRAND crayons (24 pack)
- Scissors (children's)
- Notebooks, 70 sheets/one subject, college or wide ruled.



Questions? call Edie Cooke at 253 905-9131.

WELCA NEWS

The FLC WELC group will have its first Fall meeting Sept.14,2016 at 10:00am.
We will be making plans for projects in the coming year and start another Bible study.
All FLC women are invited. We have a great fellowship!

Pam Asberry

Magazines available

There are many excellent and inspiring articles in our "Gather" magazine (which also contains the Bible Study guide). Look for copies from 2016 in the Fellowship Hall and help yourself.

SW WASHINGTON WELCA
Reformation Theme Fall Event
October 15,2016

Racial Justice Advocacy presentation
Immanuel Lutheran Church, Centralia, WA.
Registration is \$20.00, includes lunch

Please see Pam Asberry for a registration form.



FLC Welcomes Busy Bee Preschool!



First Lutheran Church is excited to welcome Busy Bee Preschool. Classes will begin on Monday, September 12th. If you have questions about enrollment please call (844)644-BEES (2337)



Quilters

The quilters need your help. We are very low on sheets that we use for the backs of our quilts. If you can provide us with full or queen size sheets it would be greatly appreciated. They can either be new or used. We have used mostly used sheets in the past, but any kind will be welcomed. There are a lot of garage sales this time of the year, so if you are out and about and see some sheets, grab them for the quilters.

Thanks,

Your quilters



FIND YOUR NICHE



VOLUNTEER!

Looking for an opportunity to serve at First Lutheran Church?

Please feel free to join one of many committees at First Lutheran. All Meetings are in the Fireside Room.

Meeting schedule:

Church Council - 3rd Monday of the Month, 7:00pm.

Worship & Music- 1st Tuesday of the month, 6:30pm.

Finance- 2nd Tuesday of the month, 6:00pm.

Building and Property- 1st Wednesday of the month, 5:00pm.

Outreach - 2nd Wednesday of the month, 5:00pm.

- We would like to invite anyone who is interested to join our Altar Guild.
We are always in need of worship Assistants, and hospitality volunteers.



September Birthday Blessings

Table listing names and dates for September birthday blessings, including Vernon Troy (3), Linda Fuson (7), Josh Ingraham (11), Linda Black (12), Sharon Lavell (15), Diane Wasalino (15), Jerry Peterson (16), Mitchell Randal (19), Ronald Septon (20), Nicole Olson (24), Cecelia Ireland (25), Wonda Johnson (25), Tessa Wiley (26), and Stan Mueller (27).



September

Anniversaries

Table listing names and dates for September anniversaries, including Stanley & Julia Mueller (8), Bruce & Gloria Steel (13), and Jason Paul & Stacy Lavell (16).

Note:

If you have a birthday or anniversary in a certain month and you don't see your name, please call the church office with the information so you can be added to the list. I do not want to leave anyone out, however if I don't have the dates, some people will not be recognized.

2016 Schedule of meetings

Weekly Meetings

Sundays

8:00 AM - Communion Worship - C
9:15 AM - Sunday School - UR
9:30 AM - Adult Forum - FR
9:30 AM - New Testament Church - C
10:30 AM - Communion Worship - S

Mondays

Office closed

Tuesdays

Wednesdays

6:00 PM - Adult Bible Study-FR

Thursdays

10:30 AM - Adult Bible Study - FR
5:45 PM - Bell Practice - S
(begins on Thursday, October 6th)
8:00 PM - AA Meeting - FH

Fridays

7:00 PM - AA Meeting - FH

Monthly Meetings

First Sunday

Food Offering

Third Monday

7:00 PM - Church Council - FR

First Tuesday

6:30 PM - WAM - FR

Second Tuesday

10:00 AM - Quilting - FR
6:00 PM - Finance Committee - FR

First Wednesday

5:00 PM - Building & Property - FR

Second Wednesday

10:00 AM - WELCA - FR
5:00 PM - Outreach Meeting - FR

First Friday

1:00 PM - First Friday Club - FR

Room Legend:

S=Sanctuary	C=Chapel
FR=Fireside Room	FH=Fellowship Hall
UR=Upstairs Rooms	PO=Pastor's Office



Contact Us...

First Lutheran Church

**524 South "I" Street Tacoma WA 98405
Phone: 253-272-1538 Fax: 253-572-0331**

First Lutheran Church Staff & Volunteers

Steven Ray, Pastor
pastor@flctacoma.org

Judy Bebich, Office Administrator
office@flctacoma.org

Una Hwang, Organist/Pianist
uahwang@gmail.com

Liz Tweeten, Kids' Choir Director
jltweeten@gmail.com

Dave Carlson, Congregational President
carlsoda@comcast.net

Wedding Team
office@flctacoma.org

Website: www.flctacoma.org

Council Corner

Dave Carlson, President

Karin Hirschert, Vice President

Sharon Bongfeldt, Secretary

Gary Crawford, Finance

Beth Thoms

Carla Carlson

Jerry Peterson

Jim Ofelt

Kristy Johnson

Pastor Steven Ray

The next meeting will be Monday, September 19th at 7:00pm in the Fireside Room.

~~~~~

**Deadline: First Reports**

All the information for the November First Reports is due in the church office no later than **Thursday, September 23rd**. If you do not have your information submitted by the due date, it will **not** be published in the issue. In order for FLC members to receive the newsletter by the first of each month, all information needs to be submitted by the due date. You may e-mail your articles and information to the church office: [office@flctacoma.org](mailto:office@flctacoma.org).

# Worship Assistants September 2016

## We Need Your Help!

How would you like to serve First Lutheran? We are always in need of volunteers for Ushers, Greeters, Readers, and Communion Assistants for 5:00pm worship service on Saturday, and 8:00 & 10:30am worship services on Sunday. If you are available and able to give some time to serve, please call the church office.



## 10:30 AM

### September 4

#### **Acolytes:**

Clara Norman

#### **Assisting Minister:**

Duane Hulbert

#### **Eucharistic Ministers:**

Karin Hirschert, Fred Moore

#### **Lay Ministers:**

Judy Hulbert, Beth Thoms

#### **Altar Guild Representative:**

Ellen Wilcoxson

### September 18

#### **Acolyte:**

Bennett Jett

#### **Assisting Minister:** Paul Twedt

#### **Eucharistic Ministers:**

Sheila Hughes, RoAnn Septon

#### **Lay Ministers:**

Dick & Edie Cooke

#### **Altar Guild Representative:**

Ellen Wilcoxson

### **September 11**

#### **Acolyte:**

Austin Brown

#### **Assisting Minister:** John Tweeten

#### **Eucharistic Ministers:**

Juanita Carlson, Karen Fynboe

#### **Lay Ministers:**

Carla Carlson, Dave Carlson

#### **Altar Guild Representative:**

Ellen Wilcoxson

### September 25

#### **Acolyte:**

William Thoms

#### **Assisting Minister:**

Maureen Walker

#### **Eucharistic Ministers:**

Juanita Carlson, Karin Hirschert

#### **Lay Ministers:**

Owen Carlson, Liz Tweeten

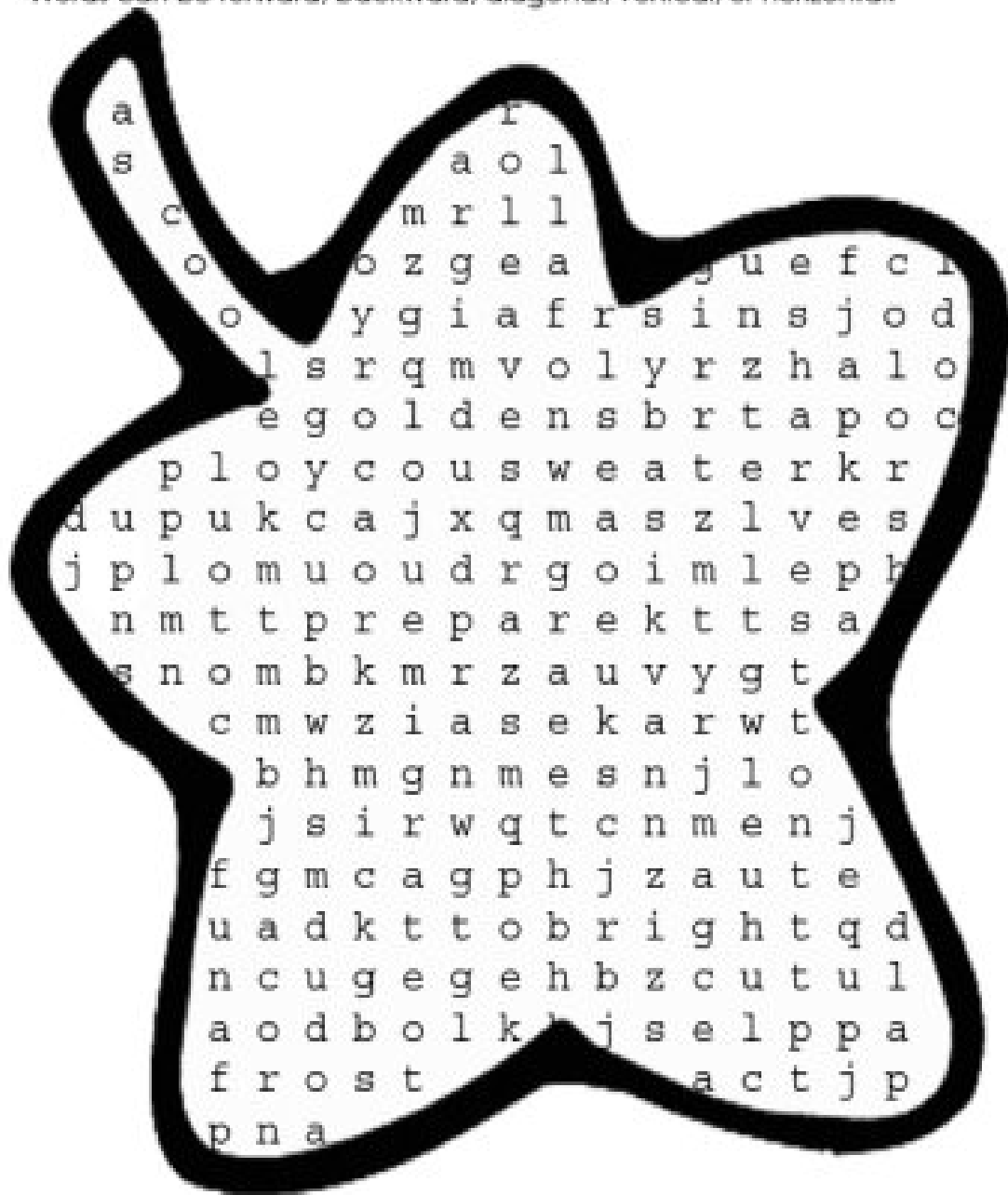
#### **Altar Guild Representative:**

Ellen Wilcoxson

## Autumn Word Search Puzzle

Find and circle the autumn related words in the puzzle.

Words can be forward, backward, diagonal, vertical, or horizontal.



### Autumn Words

|         |         |         |         |         |
|---------|---------|---------|---------|---------|
| fall    | apples  | smoky   | prepare | golden  |
| autumn  | migrate | pumpkin | frost   | sweater |
| harvest | cool    | acorn   | rake    | bright  |
| colors  | leaves  |         |         |         |

| Sunday                                                                                                                                                                                                                           | Monday                                                                                | Tuesday                                                                             | Wednesday                                                                                                        | Thursday                                                                                | Friday                                                                                                                            | Saturday                                                                                                                                                                                                  |
|----------------------------------------------------------------------------------------------------------------------------------------------------------------------------------------------------------------------------------|---------------------------------------------------------------------------------------|-------------------------------------------------------------------------------------|------------------------------------------------------------------------------------------------------------------|-----------------------------------------------------------------------------------------|-----------------------------------------------------------------------------------------------------------------------------------|-----------------------------------------------------------------------------------------------------------------------------------------------------------------------------------------------------------|
| <b>September<br/>2016</b>                                                                                                                                                                                                        |                                                                                       |                                                                                     |                                                                                                                  | <b>1</b><br>10-1 Una<br><b>8:00 PM</b> AA Meeting                                       | <b>2</b><br>10-1 Una<br><b>7:00 PM</b> AA Meeting                                                                                 | <b>3</b><br>First Saturday Food Offering<br><b>5:00 PM</b> Communion Worship<br><b>6:30 PM</b> NTC Prayer Meeting                                                                                         |
| <b>4</b><br>First Sunday Food Offering<br><b>8:00 AM</b> Communion Worship<br><b>9:30 AM</b> NTC<br><b>10:30 AM</b> Communion Worship                                                                                            | <b>5</b><br>10-1 Una<br>Church offices closed                                         | <b>6</b><br>11-2 Una<br><b>6:30 PM</b> WAM                                          | <b>7</b><br><b>5:00 PM</b> Building & Property Mtg.                                                              | <b>8</b><br>10-1 Una<br><b>8:00 PM</b> AA Meeting                                       | <b>9</b><br>10-1 Una<br><b>1:00 PM</b> First Friday Club<br><b>7:00 PM</b> AA Meeting                                             | <b>10</b><br><b>7:30 AM</b> Men's Bread/Breakfast<br><b>5:00 PM</b> Communion Worship<br><b>6:30 PM</b> NTC Prayer Meeting                                                                                |
| <b>11</b><br>RALLY SUNDAY<br><b>8:00 AM</b> Communion Worship<br><b>9:30 AM</b> Adult forum<br><b>9:30 AM</b> NTC<br><b>10:30 AM</b> Communion Worship<br><b>11:30 AM</b> Congregational Mtg.<br><b>12:00</b> Outreach Breakfast | <b>12</b><br>10-1 Una<br>Busy Bee Preschool Begins at<br>FLC<br>Church offices closed | <b>13</b><br>11-2 Una<br><b>10:00 AM</b> Quilting<br><b>6:00 PM</b> Finance Meeting | <b>14</b><br><b>10:00 AM</b> WELCA<br><b>5:00 PM</b> Community Outreach Mtg.<br><b>6:00 PM</b> Adult Bible Study | <b>15</b><br>10-1 Una<br><b>10:30 AM</b> Adult Bible Study<br><b>8:00 PM</b> AA Meeting | <b>16</b><br>10-1 Una<br><b>7:00 PM</b> AA Meeting                                                                                | <b>17</b><br><b>6:00 AM</b> Pasta with Friends Dinner/<br>Dessert Auction Fund-Raiser<br><b>5:00 PM</b> Communion Worship<br><b>5:00 PM</b> Reception of New Members<br><b>6:30 PM</b> NTC Prayer Meeting |
| <b>18</b><br><b>8:00 AM</b> Communion Worship<br><b>9:15 AM</b> Sunday School Begins<br><b>9:30 AM</b> Adult forum<br><b>9:30 AM</b> NTC<br><b>10:30 AM</b> Communion Worship<br><b>10:30 AM</b> Reception of New Members        | <b>19</b><br>10-1 Una<br>Church offices closed<br><b>7:00 PM</b> Church Council       | <b>20</b><br>11-2 Una                                                               | <b>21</b><br><b>6:00 PM</b> Adult Bible Study                                                                    | <b>22</b><br>10-1 Una<br><b>8:00 PM</b> AA Meeting                                      | <b>23</b><br>10-1 Una<br>First Reports Newsletter<br>Deadline<br><b>6:00 PM</b> chinacconnect dinner<br><b>7:00 PM</b> AA Meeting | <b>24</b><br><b>5:00 PM</b> Communion Worship<br><b>6:30 PM</b> NTC Prayer Meeting                                                                                                                        |
| <b>25</b><br><b>8:00 AM</b> Communion Worship<br><b>9:15 AM</b> Sunday School<br><b>9:30 AM</b> Adult forum<br><b>9:30 AM</b> NTC<br><b>10:30 AM</b> Communion Worship                                                           | <b>26</b><br>10-1 Una<br>Church offices closed                                        | <b>27</b><br>11-2 Una                                                               | <b>28</b><br><b>6:00 PM</b> Adult Bible Study                                                                    | <b>29</b><br>10-1 Una<br><b>10:30 AM</b> Adult Bible Study<br><b>8:00 PM</b> AA Meeting | <b>30</b><br>10-1 Una<br><b>7:00 PM</b> AA Meeting                                                                                |                                                                                                                                                                                                           |

WORSHIP SERVICES AT FLC



**Saturday Evening - 5:00 PM- Chapel**

~~~~~

Sunday Morning - 8:00am - Chapel

Sunday Morning - 10:30 AM - Sanctuary

(Nursery Available)

Activity Bags are available for 3–7 year old children for use during the services.

Ask an usher if you need assistance.

Adult Forum - 9:30am - Fireside Room

Sunday School - 9:30AM - Sunday School Rooms upstairs

(Sunday School begins Sunday, September 18th)

Please Come Join Us. All Are Welcome!



Invite a Friend or Neighbor to Church!